



INSTALL GUIDE

Porsche 991 & 991.2 ECU Removal



Difficulty

 **Intermediate**

Specialty Tools Required

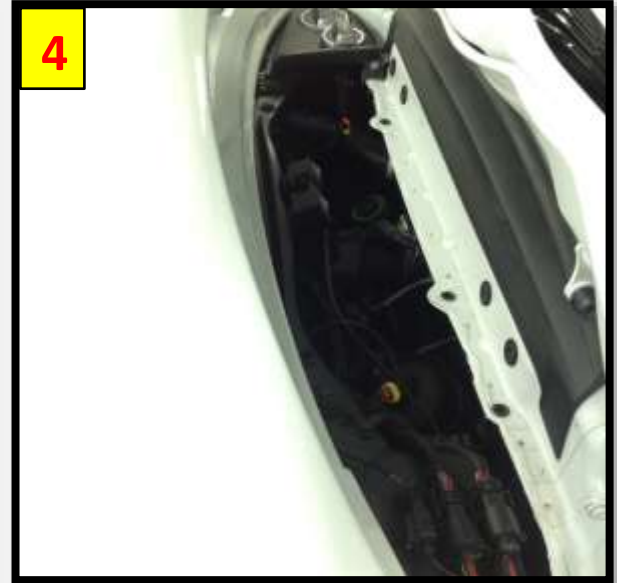
*Low Profile T45 Torx
Low Profile T25 Torx
Masking Tape
T30 Torx*

CAUTION

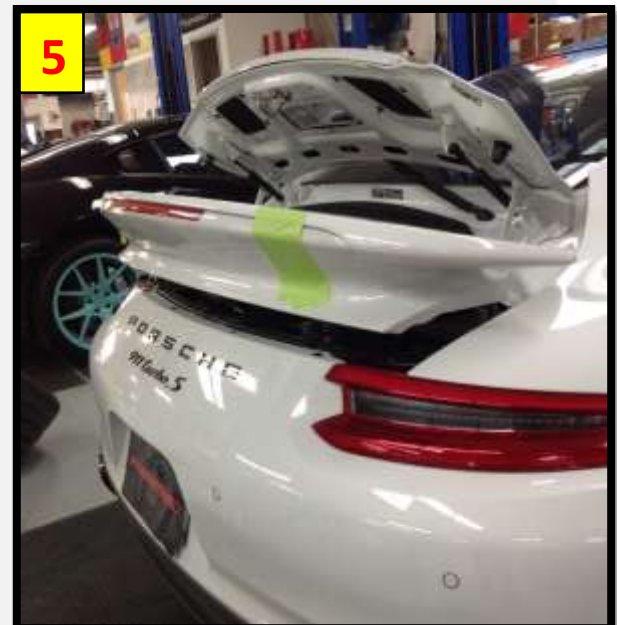
- Always allow car to cool before performing any installation(s) or service(s) on it.
- Always disconnect negative battery terminal before beginning service.
- Always be sure to work on an even and level surface when raising vehicle(s) with a jack, and support all raised vehicles with locked jack stands once elevated.
- Fabspeed Motorsport recommends that all installations be supervised or verified by a trained professional technician.
- Fabspeed Motorsport is not responsible for any personal injury or damage(s) sustained to a vehicle during installation of aftermarket performance parts.



1. Though it is possible to remove ECU with bumper/ spoiler in place, it's a very difficult task. This guide will outline how to remove everything, but you may want to try first without. Skip to step 14 for ECU location.
2. Fully extend spoiler.
3. Raise Vehicle on lift or jack stands.
4. Remove engine covers. Start by removing the hard ring from intake accordion. This allows the fan cover to pop off around it. Next fans pop out, followed by the intake duct and right-side cover. These are all push connections, no fasteners.



5. Remove spoiler base hardware. (x2) T30 bolts. Pushing forward on the very trailing edge releases the remaining clips. Spoiler base cover is now free. Lift up and tape to extended spoiler.

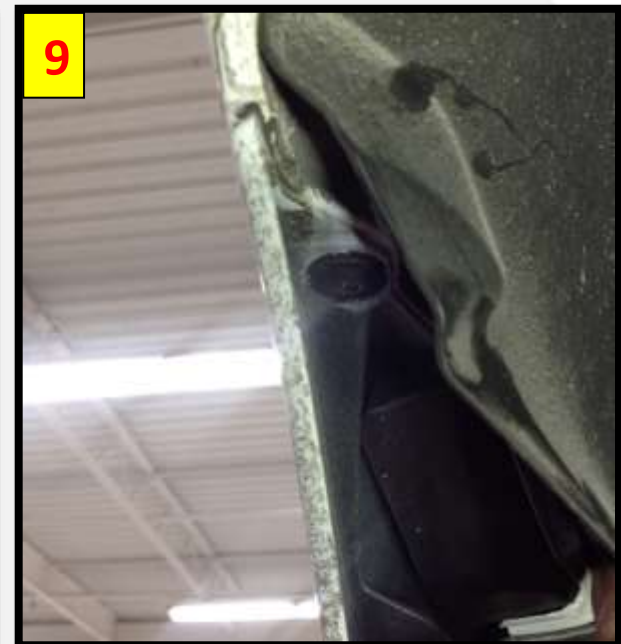




6. Remove taillamps. (x2) T25 bolts per side. Swing out and disconnect the wire connection.

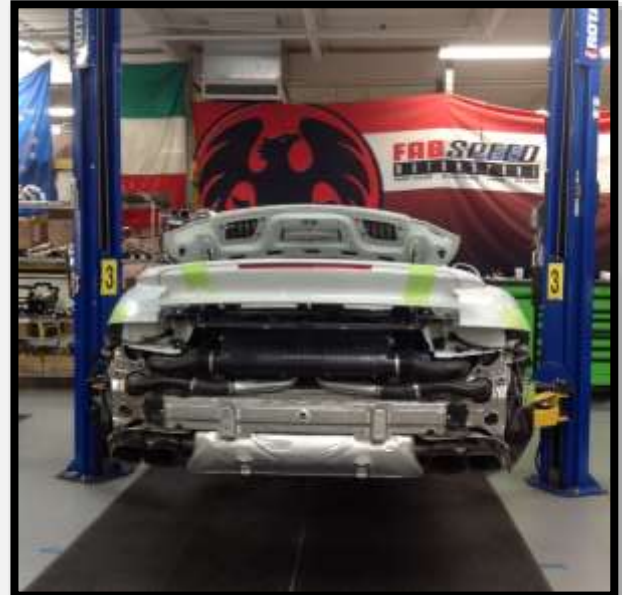


7. Disconnect the rear bumper harnesses. (x2) Behind right side taillamp. (x1) Behind left. Tip: taping them to the bumper cover makes reassembly easier and prevents missed connections.
8. Remove splash guards. If vehicle is equipped with center lug wheels the liner can be removed with wheel in position, but a very low profile T25 driver is necessary.
9. Remove hidden T30 bolt facing up from inside wheel well. This retains the bumper cover's forward leading edge.



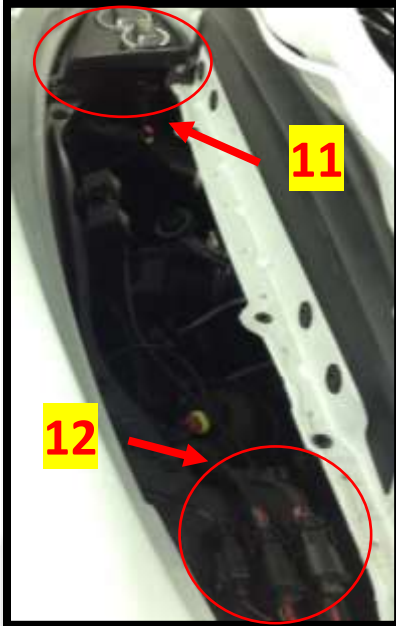


10. Remove remaining bumper cover hardware located at the top edge below the spoiler, bottom edge, and one behind each taillamp. All are T30 shouldered bolts. Taping over the quarter panel at the bumper edge helps prevent scratches during removal. Pulling out and rearward from each side removes the bumper cover. One person on each side suggested.





11. Remove coolant fill cap. Single 10mm bolt retains the oil fill surround cover. Carefully lift cover to gain access to spoiler assembly bolt.
12. Disconnect spoiler assembly electrical connectors.
13. Remove (x4) T45 bolts securing spoiler assembly. Carefully lift spoiler from vehicle. Low profile T45 is required to fit below spoiler base cover.



14. Locate ECU in upper right-hand corner of engine compartment.





15. Remove plastic shield.



16. Unplug harnesses from ECU.

17. Remove (x2) 10mm nuts securing ECU bracket.





18. Follow procedure in reverse for installation.

Warning: ECU is a delicate, expensive computer highly susceptible to damage from impact, voltage spikes, water, heat, etc. Pin's are easily bent if touched. Package well and be sure to insure your package!

If you have any questions, comments, or concerns related to your product, please contact us!