

FERRARI 458 ITALIA

Install notes:

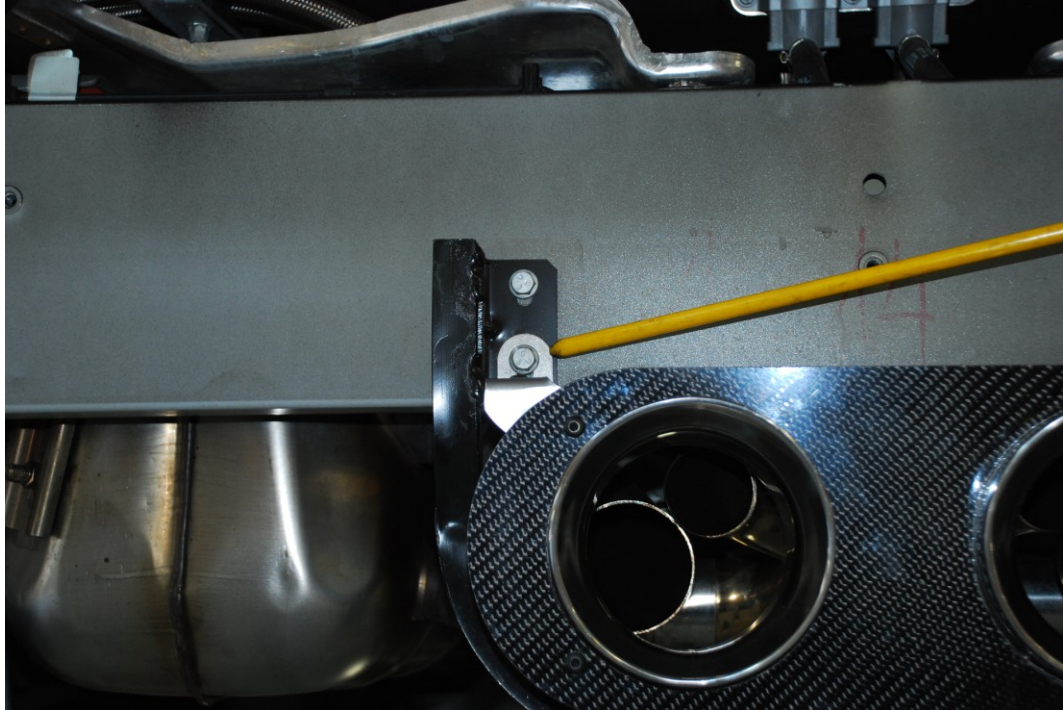
Fabspeed Challenge tips-

- In order to install Fabspeeds dual style challenge tips the bumper and lower panels must be removed.
- Stock Ferrari tips can be removed.
- The removal of the foam bumper support is recommended by removing (3) allen bolts.



Existing tip "U" frame can be left on as this is one of locations that the Fabspeed Challenge tips will be re mounted.

- Fabspeed has provided (2) mounting tabs that can now be bolted over top of the existing "U" frame utilizing existing hardware.



The Fabspeed challenge tips will come pre assembled except for the prior (2) mounting brackets. The bottom of the tip bracket will be slotted to align on the bottom of the "U" frame. The top of the tip bracket will be bolted to the (2) 90 degree bent brackets using enclosed hardware.

- (NOTE: If stock mufflers are going to be used Customer must be supplied with a new quiet outlet X pipe.)
This X pipe is not required if customer will be installing Fabspeed mufflers.



